

2024

Karan Desai

HOME

×

SERAFINI
C O M

Serafini, located in Chiampo (Italy), a city internationally renowned for its marble production, has evolved into one of the most innovative marble factories, producing design-driven products and objects. At the 2013 Milan Fair, a chance encounter sparked the idea for a bench that transcends mere functionality, symbolizing unity and connection. Designed by Karan Desai, it reflects the beauty of cultural exchange and serves as a humble tribute to inclusivity and empathy, fostering connections that transcend boundaries.

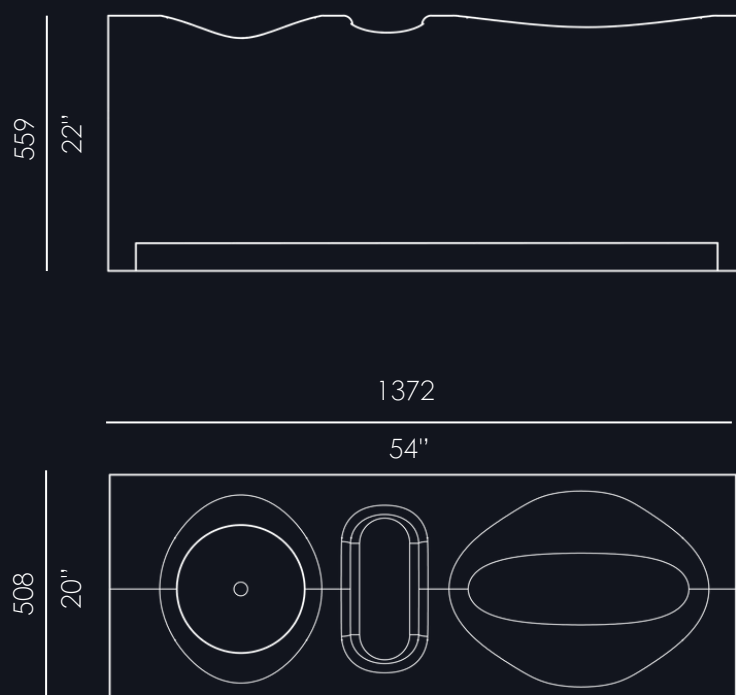
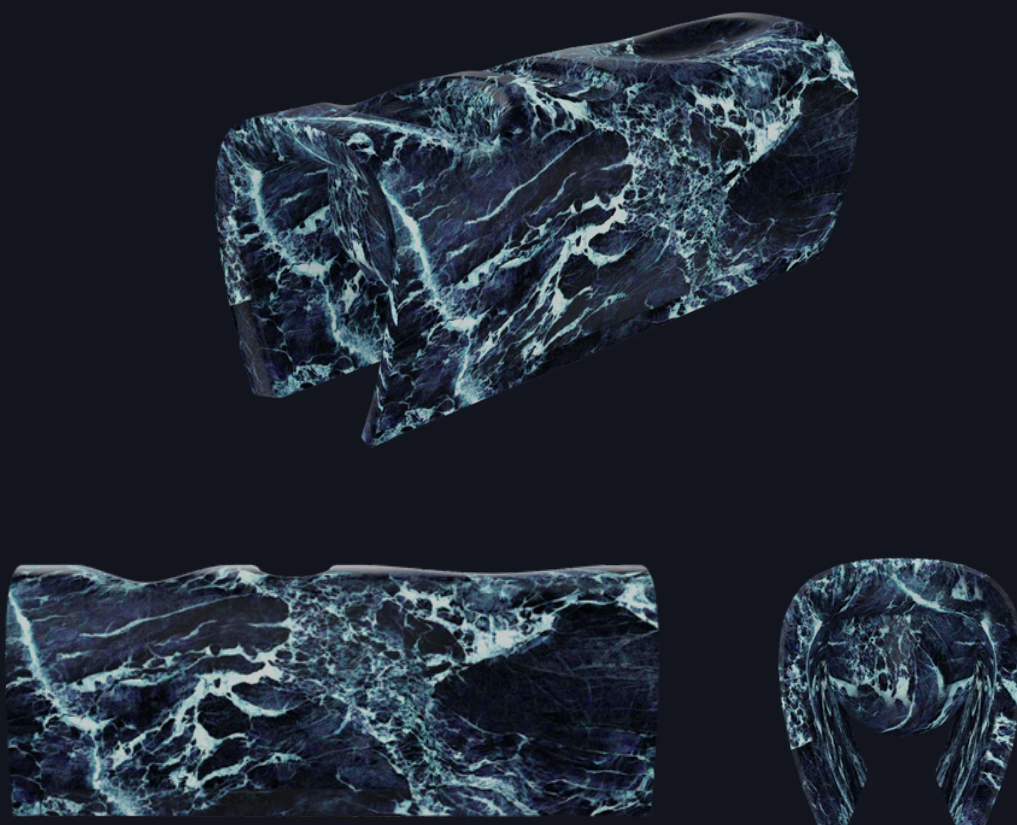
The Samaveta bench, designed for indoor and outdoor use, blends comfort and versatility. Its contoured seating ensures ergonomic support, while a flat surface provides space for personal items. A built-in vessel can house plants for shade or serve creative indoor purposes like an ice bucket. Features like a horseshoe-shaped seat and heel skirting enhance comfort, while its sleek design balances strength and elegance.

A testament to cultural synthesis and thoughtful design, the Samaveta bench combines functionality, aesthetics, and innovation, enriching any space it inhabits.



SAMAVETA BENCH





Dimensions in millimeters and inches.

SAMAVETA BENCH

Karan Desai

HOME

KARAN DESAI

+91 7977112242

1001 PARINEE I, 7-A, SHAH INDUSTRIAL ESTATE, ANDHERI
WEST, MUMBAI

@ karandesaihome

✉ home@karandesai.in

SERAFINI
C O M

SERAFINI

+39 0444688771

SERAFINI GALLERY, CORSO DE PORTA, ROMANA, 7
MILAN, ITALY

@ serafini_com

✉ hello@serafini.com

Check out the bench at- [Serafini Samaveta Bench](#)